

POND LILY (4 UNIT)

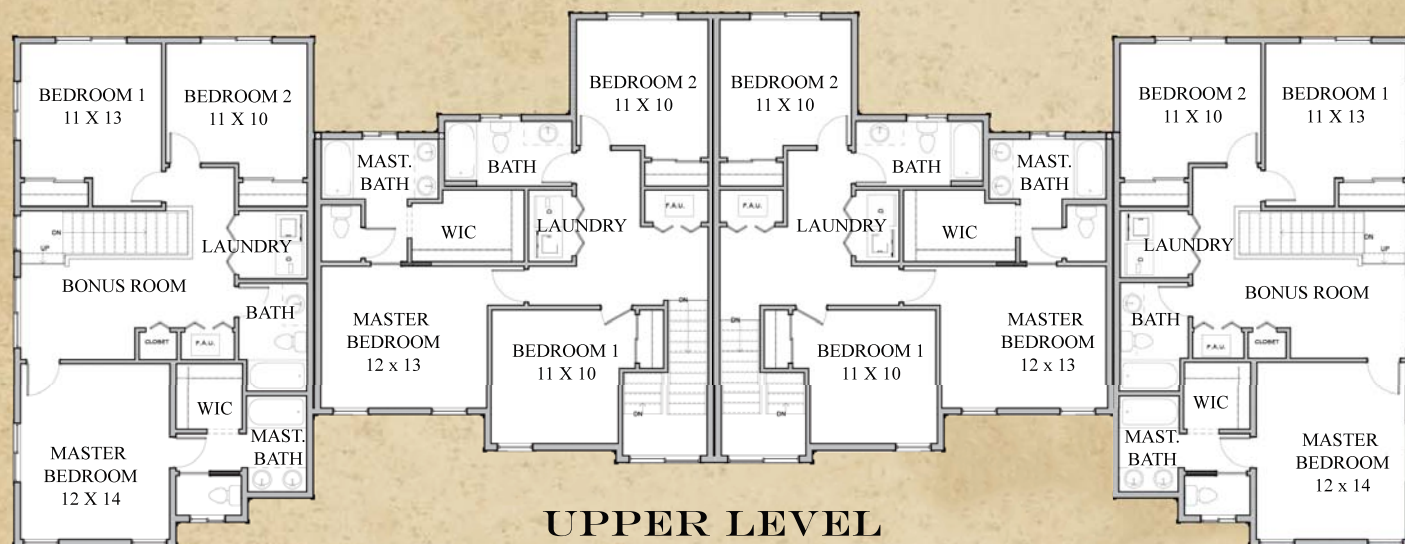
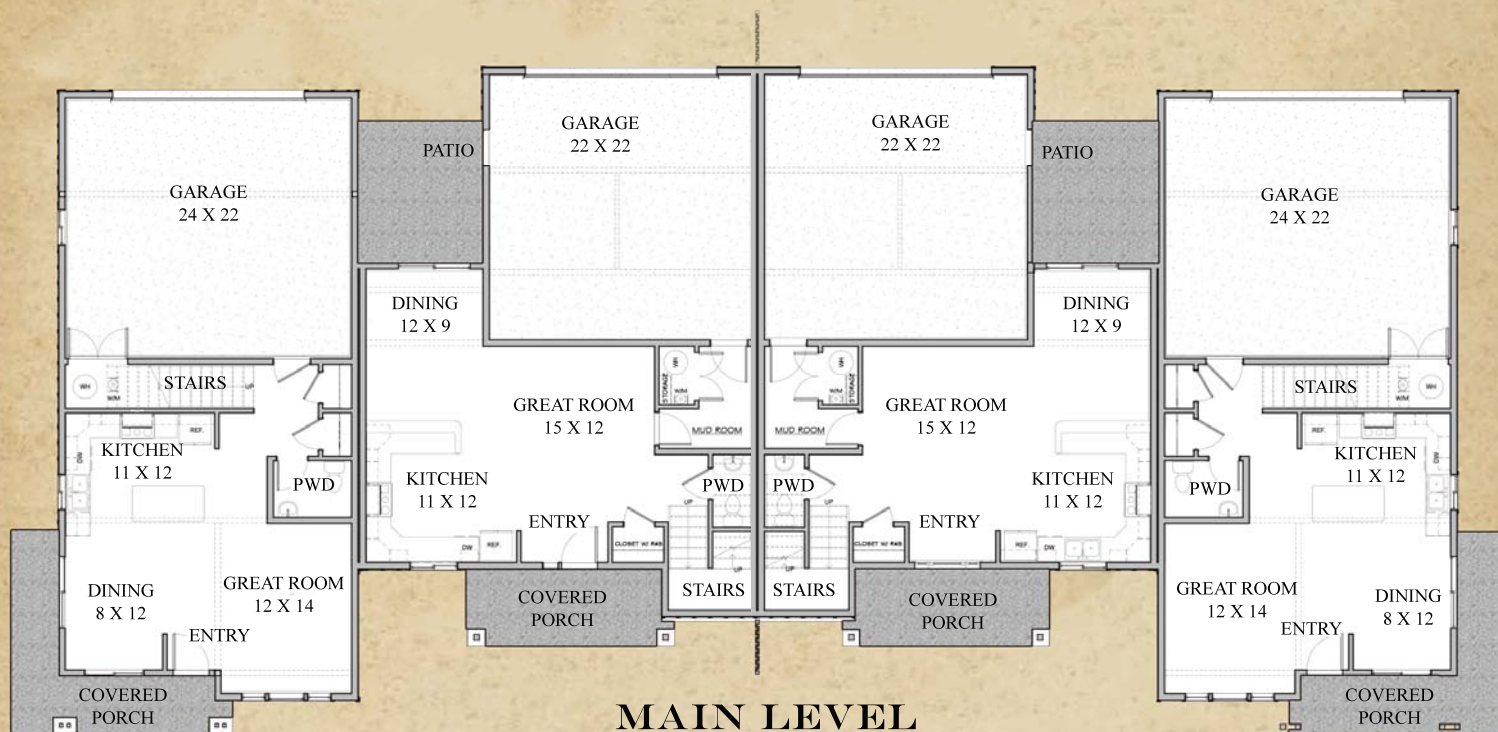


**TWO STORY TOWNHOME WITH THREE
BEDROOMS TWO AND ONE HALF
BATHS AND AT LEAST 1508 SQUARE FEET**

Welcome to Norton Ranch Homes' latest addition to the neighborhood—the Pond Lily Townhomes. The townhomes' two-story design offers a spacious, livable floor plan. The living room, dining room and kitchen join to promote an enjoyable atmosphere for gathering friends and family. Homeowners appreciate the privacy and security of the second story location of all the bedrooms. The large covered porch is both sheltering and architecturally appealing. Townhomes offer the best of a carefree lifestyle with exterior structural maintenance and lawn care all handled by the homeowners' association for an affordable quarterly fee.

POND LILY (4 UNIT)

THREE BEDROOMS, TWO BATH
TOWNHOME WITH 1508 SQUARE FEET OR MORE



*Outer units are 1508 Square Foot and inside units are 1538 square foot

Norton Ranch Homes reserves the right to modify floor plans & designs. Dimensions & square footage are approximate. Renderings or photos may be of similar home offered.