



NORTON RANCH HOMES

(541) 728-0378 www.NortonRanchHomes.com

Sales Office: Denise Andres (406) 580-5065

ASK ABOUT OUR MOVE IN READY
MODELS AND THE UPGRADE FEATURES
AVAILABLE FOR THIS PLAN



PRIMARY BEDROOM



LIVING ROOM AND KITCHEN

STANDARD FEATURES

- ✓ Two Covered Exterior Patios
- ✓ 3 Bedrooms / 2 Baths / Vaulted Ceilings
- ✓ Primary Bedroom Suite With Attached Ensuite Bathroom
- ✓ One-Story Plan With Separate Laundry
- ✓ Double Garage, Fenced Back Yard (Phase 5A Only), Community Garden & Walking Trails

THE BITTERROOT PLAN


At 1,486, the smartly designed Bitterroot maximizes every inch of space for a comfortable and efficient home. Featuring a contemporary roof line, this home has extraordinary street appeal. Under vaulted ceilings, dining and living rooms share a considerably expansive space and are overlooked by a highly functional kitchen with an island that provides ample storage and counter space. The spacious primary bedroom suite has its own bathroom with a dual sink vanity and fiberglass stand up shower. The second and third bedrooms have access to the hall bathroom with a full shower/tub. For convenience, the laundry room is located close to the bedrooms. Two patios offer plenty of opportunities for outdoor enjoyment.

PRICED STARTING AT
\$635,000

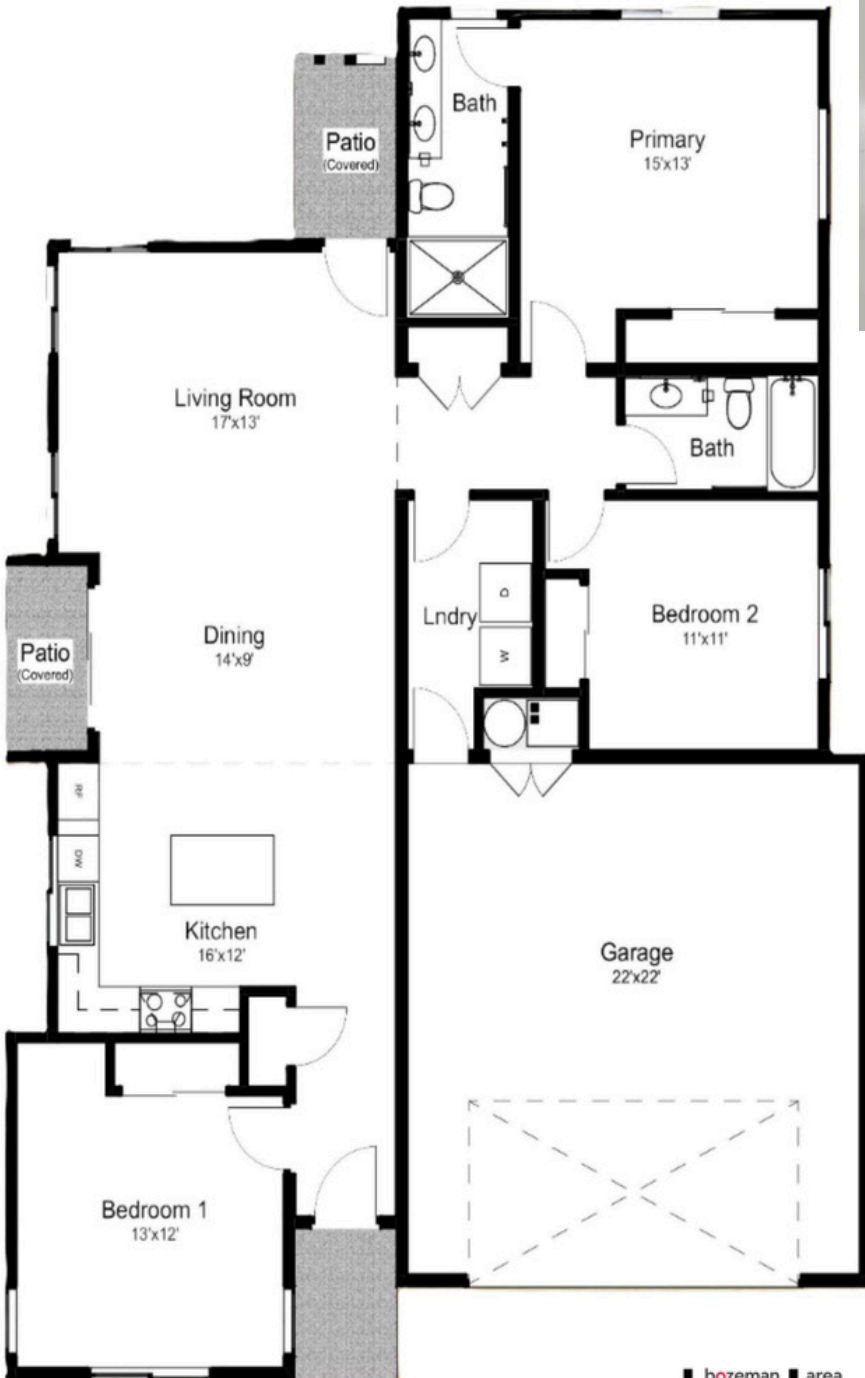


 NRH Design Center: 37 Westgate Ave., Bozeman, MT

 www.NortonRanchHomes.com

 Sales Agent: Denise Andres
(406) 580-5065

THE BITTERROOT PLAN



REVISED 3.16.26 The specifications provided in this marketing material; including but not limited to measurements, photos, floorplans, elevations, materials, colors and finishes, are for illustration purposes only. The final plans, pricing and specifications may vary from this illustration based on specific address and Norton Ranch Homes reserves the right to make changes without notice.