

SANDPIPER TOWNHOME



THREE BEDROOMS TWO & ONE-HALF BATHS

Brand-new town home in a terrific neighborhood close to MSU, Ferguson Farms' restaurants, Town & Country, Whole Foods, Ridge Athletic Club, schools, parks and more. The well-designed floor plan features the kitchen, dining, living room, and half bath on the first floor. The primary bedroom on the second floor has an ensuite bath with a double vanity, shower/tub, and an oversized walk-in closet. The other nice-sized bedrooms share a full bathroom just off the hall. The laundry room, with space for a non-stacking washer and dryer are conveniently located on the second floor. There is a bonus area which could serve as a home office, exercise equipment space or children's play area.

Denise Andres

406-580-5065

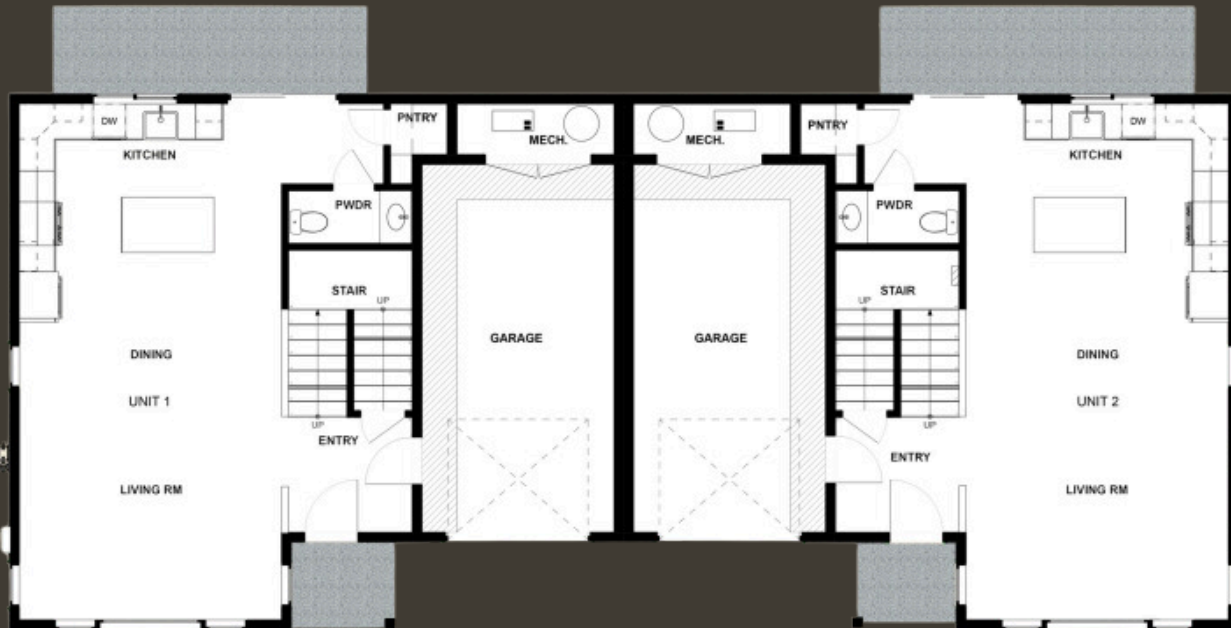
Berkshire Hathaway HomeServices
Montana Properties



www.DeniseAndres.com
Denise@DeniseAndres.com

SANDPIPER TOWNHOME

THREE BEDROOMS • TWO & ONE-HALF BATHS



MAIN LEVEL

UPPER LEVEL



Denise Andres

406-580-5065

Berkshire Hathaway HomeServices
Montana Properties



www.DeniseAndres.com
Denise@DeniseAndres.com